

# Burdick

## FIRST FLOOR

FIRST FLOOR BED COUNT:

DOUBLES: 1 (2)

FULL: 1

TOTAL CAPACITY = 3 (4 if 2 in full size bed)

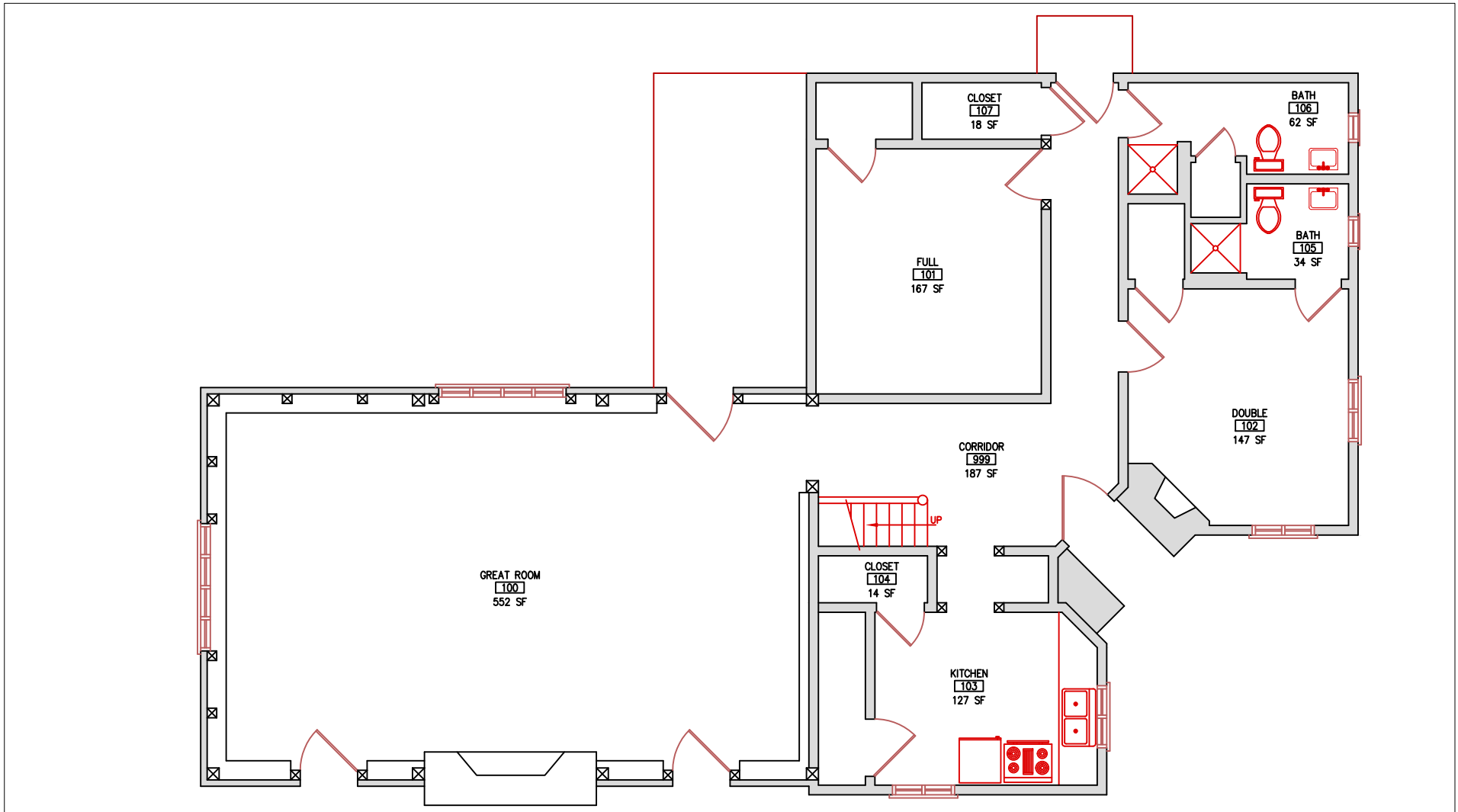
Total Capacity (1st & 2nd Floors) = 8

Total Capacity (1st & 2nd Floors if 2 in FULL beds) = 9

DOUBLE = 2 twin beds

FULL = 1 full size bed

SINGLE: 1 twin size bed



# Burdick

## SECOND FLOOR

SECOND FLOOR BED COUNT:

DOUBLES: 2 (4)

SINGLES: 1

TOTAL CAPACITY = 5

Total Capacity (1st & 2nd Floors) = 8

Total Capacity (1st & 2nd Floors if 2 in FULL beds) = 9

DOUBLE = 2 twin beds

FULL = 1 full size bed

SINGLE = 1 twin size bed

