

# Dragon's Den

## FIRST FLOOR

FIRST FLOOR BED COUNT:

FULL: 1 (1 bed)

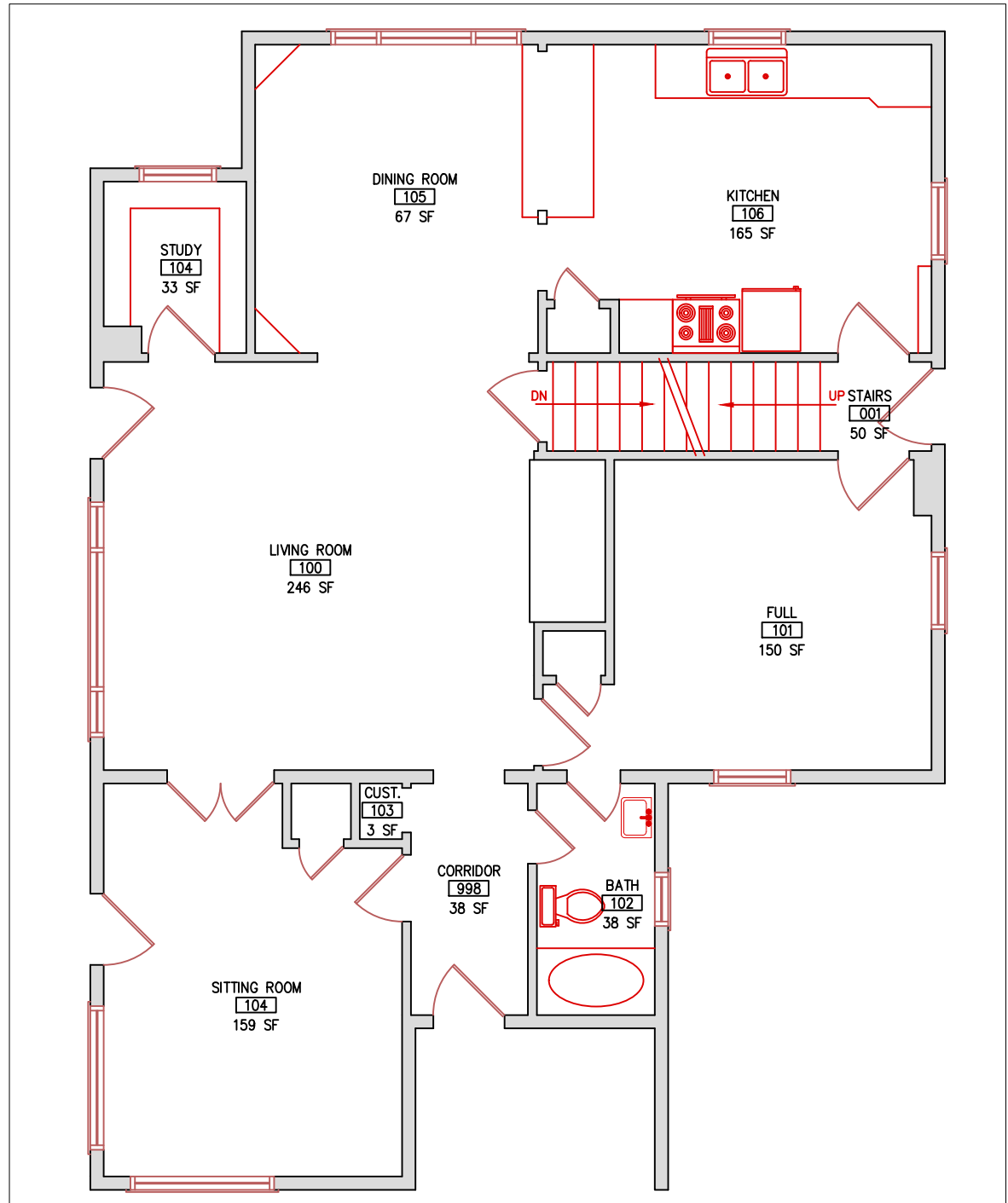
TOTAL CAPACITY = 1 (2 if 2 in full bed)

Total Capacity (1st & 2nd Floors) = 7

Total Capacity (1st & 2nd Floors if 2 in FULL beds) = 8

DOUBLE = 2 twin beds

FULL = 1 full size bed



# Dragon's Den

## SECOND FLOOR

SECOND FLOOR BED COUNT:

DOUBLES: 3 (6)

TOTAL CAPACITY = 6

Total Capacity (1st & 2nd Floors) = 7

Total Capacity (1st & 2nd Floors if 2 in FULL beds) = 8

DOUBLE = 2 twin beds

FULL = 1 full size bed

