

California's 7th Congressional District

Representative Ami Bera

District Ocean Economy Profile

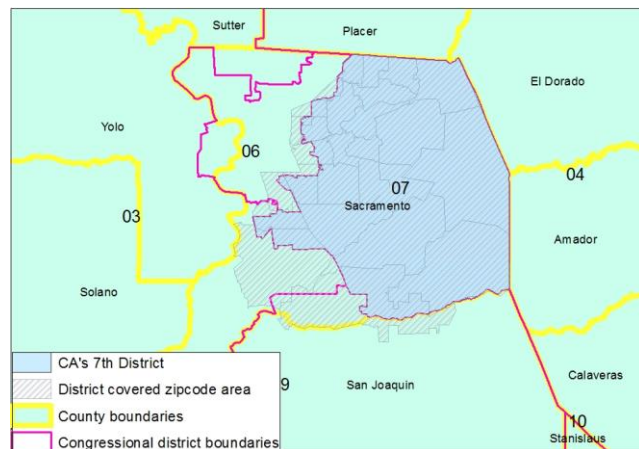
The Ocean Economy comprises 21 industries in six sectors. In 2012, the ocean economy 7th District of California is estimated to have **employed 398 people and generated \$30.1 million in contribution to the national Gross Domestic Product.**

The largest sector by employment and output is marine transportation, with 356 jobs in 2012 and \$26.2 million in GDP.



About these estimates

These estimates are drawn from the estimates of the ocean economy for Sacramento County by the National Ocean Economics Program. These estimates are derived from zip code and county level data. Overall, 7th District of California consists of 55% ocean economies in Sacramento County. For more information and definitions go to www.oceaneconomics.org



Ocean Economy Estimates

Sector	Employment	GDP
Construction - Marine	42	\$3,883,902
Living Resources - Marine	D	D
Minerals - Offshore	D	D
Ship & Boat Building and Repair	0	\$0
Tourism & Recreation - Coastal	0	\$0
Transportation - Marine	356	\$26,186,627
Total for 7 th District	398	\$30,070,529
Other	1,216	\$145,067,715

D = Disclosure issues prevent this data from being presented.

(P) = Only partial data of the sector is collected for the district portions of the counties because the sector is suppressed in one or more counties.

Total for 7th District = All the unsuppressed data in the 7th district are added up.

Other = This is the sum of suppressed sectors within the 7th district and the ocean economy in the non-district portions of the counties.

California's 15th Congressional District

Representative Eric Swalwell

District Ocean Economy Profile

The Ocean Economy comprises 21 industries in six sectors. In 2012, the ocean economy 15th District of California is estimated to have **employed 12,820 people and generated \$620.8 million in contribution to the national Gross Domestic Product.**

The largest sector by employment and output is coastal tourism & recreation, with 11,962 jobs in 2012 and \$464.2 million in GDP.



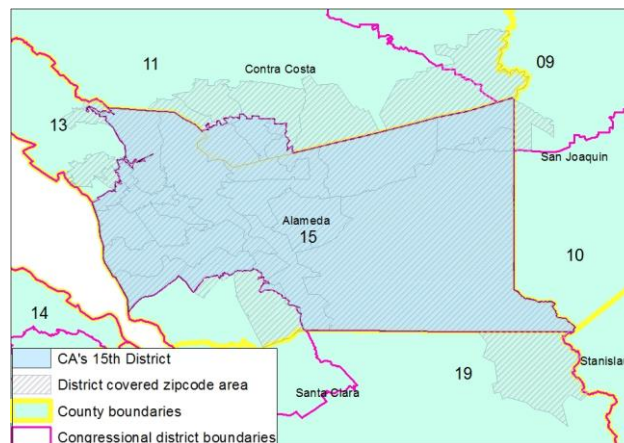
About these estimates

These estimates are drawn from the estimates of the ocean economy for Alameda County and Contra Costa County by the National Ocean Economics Program. These estimates are derived from zip code and county level data.

Overall, 15th District of California consists of 37% ocean economies in Alameda County and 14% ocean economies in Contra Costa County.

For more information and definitions go to

www.oceaneconomics.org



Ocean Economy Estimates

Sector	Employment	GDP
Construction - Marine	397	\$74,635,238
Living Resources – Marine (P)	0	\$0
Minerals – Offshore (P)	105	\$50,631,354
Ship & Boat Building and Repair	D	D
Tourism & Recreation - Coastal	11,962	\$464,195,221
Transportation - Marine	356	\$31,403,674
Total for 15 th District	12,820	\$620,865,487
Other	33,399	\$5,007,006,470

D = Disclosure issues prevent this data from being presented.

(P) = Only partial data of the sector is collected for the district portions of the counties because the sector is suppressed in one or more counties.

Total for 15th District = All the unsuppressed data in the 15th district are added up.

Other = This is the sum of suppressed sectors within the 15th district and the ocean economy in the non-district portions of the counties.

California's 19th Congressional District

Representative Zoe Lofgren

District Ocean Economy Profile

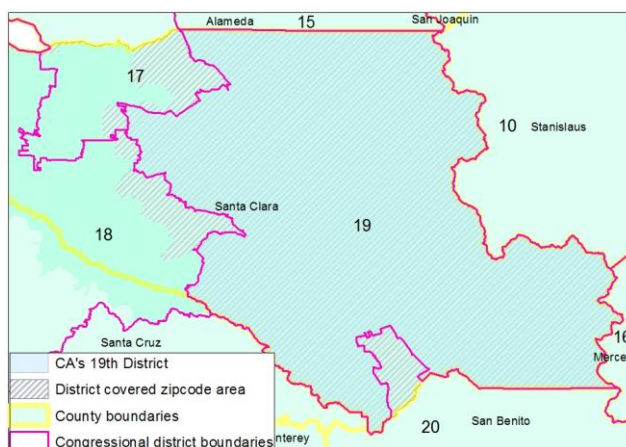
The Ocean Economy comprises 21 industries in six sectors. In 2012, the ocean economy 19th District of California is estimated to have **employed 3,370 people and generated \$269.1 million in contribution to the national Gross Domestic Product.**

The largest sector by employment is coastal tourism & recreation, with 2,429 jobs in 2012 and the largest sector by output is marine transportation, with \$128.1 million in GDP.



About these estimates

These estimates are drawn from the estimates of the ocean economy for Santa Clara County by the National Ocean Economics Program. These estimates are derived from zip code and county level data. Overall, 19th District of California consists of 49% ocean economies in Santa Clara County. For more information and definitions go to www.oceaneconomics.org



Ocean Economy Estimates

Sector	Employment	GDP
Construction - Marine	162	\$23,814,968
Living Resources - Marine	7	\$430,322
Minerals - Offshore	19	\$2,294,251
Ship & Boat Building and Repair	D	D
Tourism & Recreation - Coastal	2,429	\$114,403,639
Transportation - Marine	753	\$128,123,906
Total for 19 th District	3,370	\$269,067,086
Other	3,662	\$300,047,978

D = Disclosure issues prevent this data from being presented.

(P) = Only partial data of the sector is collected for the district portions of the counties because the sector is suppressed in one or more counties.

Total for 19th District = All the unsuppressed data in the 19th district are added up.

Other = This is the sum of suppressed sectors within the 19th district and the ocean economy in the non-district portions of the counties.

California's 25th Congressional District

Representative Steve Knight

District Ocean Economy Profile

The Ocean Economy comprises 21 industries in six sectors. In 2012, the ocean economy 25th District of California is estimated to have **employed 10,593 people and generated \$1.18 billion in contribution to the national Gross Domestic Product.**

The largest sector by employment and output is marine transportation, with 5,738 jobs in 2012 and \$884.2 million in GDP.

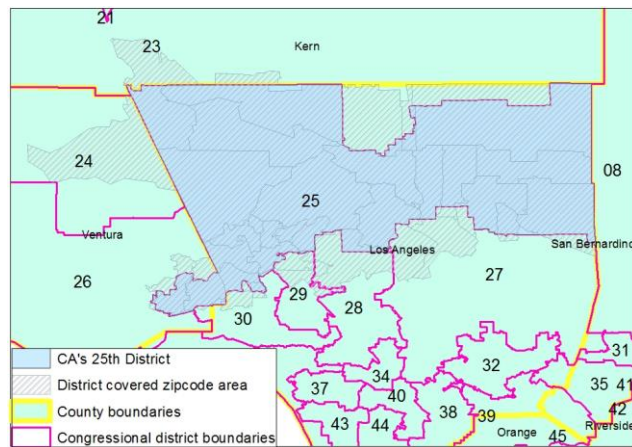


About these estimates

These estimates are drawn from the estimates of the ocean economy for Los Angeles County and Ventura County by the National Ocean

Economics Program. These estimates are derived from zip code and county level data. Overall, 25th District of California consists of 7% ocean economies in Los Angeles County and 12% ocean economies in Ventura County. For more information and definitions go to

www.oceaneconomics.org



Ocean Economy Estimates

Sector	Employment	GDP
Construction - Marine	56	\$8,286,609
Living Resources - Marine	10	\$673,893
Minerals - Offshore	131	\$83,872,949
Ship & Boat Building and Repair (P)	4	\$248,166
Tourism & Recreation - Coastal	4,654	\$203,573,799
Transportation - Marine	5,738	\$884,164,615
Total for 25 th District	10,593	\$1,180,820,030
Other	108,468	\$16,852,671,595

D = Disclosure issues prevent this data from being presented.

(P) = Only partial data of the sector is collected for the district portions of the counties because the sector is suppressed in one or more counties.

Total for 25th District = All the unsuppressed data in the 25th district are added up.

Other = This is the sum of suppressed sectors within the 25th district and the ocean economy in the non-district portions of the counties.

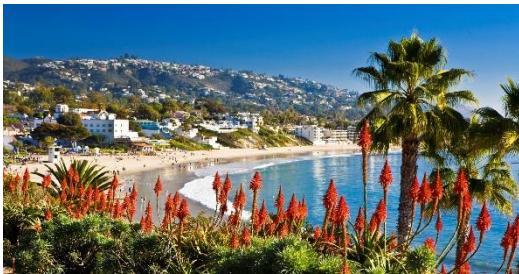
California's 48th Congressional District

Representative Dana Rohrabacher

District Ocean Economy Profile

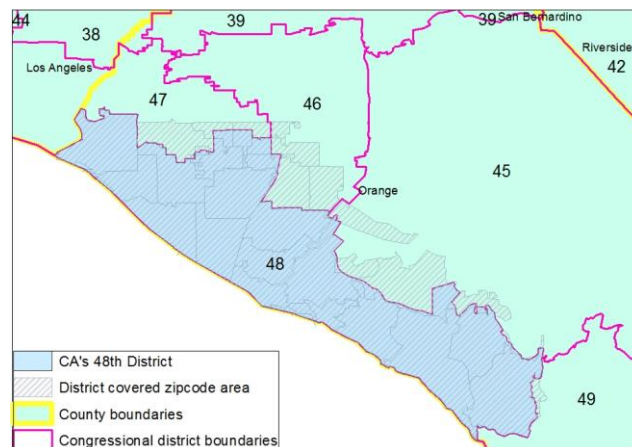
The Ocean Economy comprises 21 industries in six sectors. In 2012, the ocean economy 48th District of California is estimated to have **employed 17,379 people and generated \$1.04 billion in contribution to the national Gross Domestic Product.**

The largest sector by employment and output is coastal tourism & recreation, with 15,225 jobs in 2012 and \$725.4 million in GDP.



About these estimates

These estimates are drawn from the estimates of the ocean economy for Orange County by the National Ocean Economics Program. These estimates are derived from zip code and county level data. Overall, 48th District of California consists of 37% ocean economies in Orange County. For more information and definitions go to www.oceaneconomics.org



Ocean Economy Estimates

Sector	Employment	GDP
Construction - Marine	11	\$1,442,168
Living Resources - Marine	82	\$4,051,502
Minerals - Offshore	103	\$17,941,093
Ship & Boat Building and Repair	D	D
Tourism & Recreation - Coastal	15,225	\$725,397,257
Transportation - Marine	1,957	\$288,835,408
Total for 48 th District	17,379	\$1,037,667,427
Other	34,409	\$2,734,970,396

D = Disclosure issues prevent this data from being presented.

(P) = Only partial data of the sector is collected for the district portions of the counties because the sector is suppressed in one or more counties.

Total for 48th District = All the unsuppressed data in the 48th district are added up.

Other = This is the sum of suppressed sectors within the 48th district and the ocean economy in the non-district portions of the counties.

Connecticut's 5th Congressional District

Representative Elizabeth Esty

District Ocean Economy Profile

The Ocean Economy comprises 21 industries in six sectors. In 2012, the ocean economy 5th District of Connecticut is estimated to have **employed 5,668 people and generated \$336.8 million in contribution to the national Gross Domestic Product.**

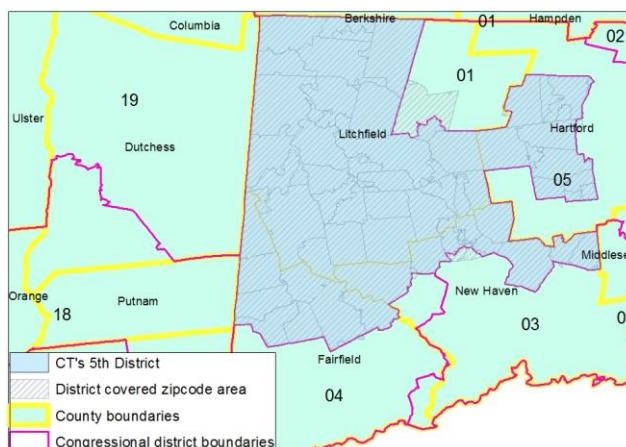
The largest sector by employment and output is coastal tourism & recreation, with 4,926 jobs in 2012 and \$217.2 million in GDP.



About these estimates

These estimates are drawn from the estimates of the ocean economy for Fairfield County and New Haven County by the National Ocean Economics Program. These estimates are derived from zip code and county level data. Overall, 5th District of Connecticut consists of 19% ocean economies in Fairfield County and 25% ocean economies in New Haven County. For more information and definitions go to

www.oceaneconomics.org



Ocean Economy Estimates

Sector	Employment	GDP
Construction - Marine	15	\$1,857,309
Living Resources - Marine	3	\$162,752
Minerals - Offshore	D	D
Ship & Boat Building and Repair (P)	0	\$0
Tourism & Recreation - Coastal	4,926	\$217,223,109
Transportation - Marine	724	\$117,532,956
Total for 5 th District	5,668	\$336,776,126
Other	22,811	\$1,624,199,104

D = Disclosure issues prevent this data from being presented.

(P) = Only partial data of the sector is collected for the district portions of the counties because the sector is suppressed in one or more counties.

Total for 5th District = All the unsuppressed data in the 5th district are added up.

Other = This is the sum of suppressed sectors within the 5th district and the ocean economy in the non-district portions of the counties.

Florida's 8th Congressional District

Representative Bill Posey

District Ocean Economy Profile

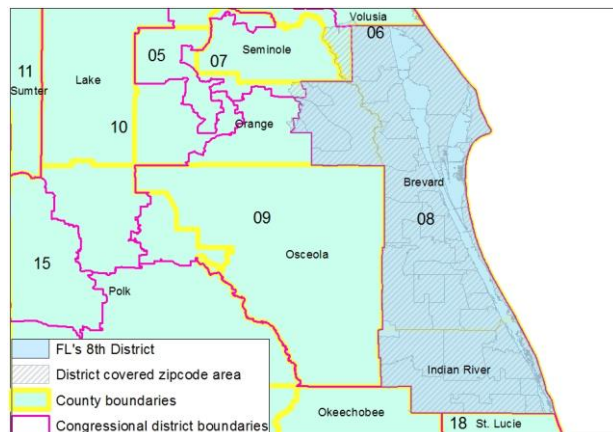
The Ocean Economy comprises 21 industries in six sectors. In 2012, the ocean economy 8th District of Florida is estimated to have **employed 23,564 people and generated \$1.23 billion in contribution to the national Gross Domestic Product.**

The largest sector by employment and output is coastal tourism & recreation, with 19,769 jobs in 2012 and \$686.4 million in GDP.



About these estimates

These estimates are drawn from the estimates of the ocean economy for Brevard County, Indian River County and Orange County by the National Ocean Economics Program. These estimates are derived from zip code and county level data. Overall, 8th District of Florida consists of 100% ocean economies in Brevard County, 100% ocean economies in Indian River County and 1% ocean economies in Orange County. For more information and definitions go to www.oceaneconomics.org



Ocean Economy Estimates

Sector	Employment	GDP
Construction - Marine	95	\$6,492,131
Living Resources - Marine	24	\$1,614,816
Minerals - Offshore (P)	16	\$5,788,424
Ship & Boat Building and Repair (P)	401	\$38,129,724
Tourism & Recreation - Coastal	19,769	\$686,370,135
Transportation - Marine (P)	3,259	\$488,723,293
Total for 8 th District	23,564	\$1,227,118,523
Other	4,904	\$475,663,519

D = Disclosure issues prevent this data from being presented.

(P) = Only partial data of the sector is collected for the district portions of the counties because the sector is suppressed in one or more counties.

Total for 8th District = All the unsuppressed data in the 8th district are added up.

Other = This is the sum of suppressed sectors within the 8th district and the ocean economy in the non-district portions of the counties.

Florida's 9th Congressional District

Representative Alan Grayson

District Ocean Economy Profile

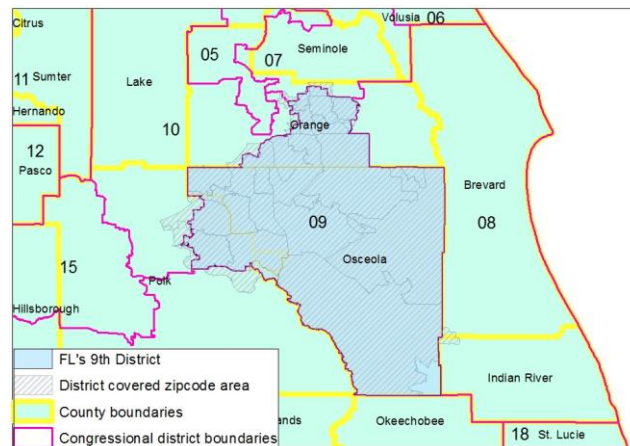
The Ocean Economy comprises 21 industries in six sectors. In 2012, the ocean economy 9th District of Florida is estimated to have **employed 426 people and generated \$31.4 million in contribution to the national Gross Domestic Product.**

The largest sector by employment is marine transportation, with 234 jobs in 2012 and the largest sector by output is ship & boat building and repair, with \$14.4 million in GDP.



About these estimates

These estimates are drawn from the estimates of the ocean economy for Orange County and Polk County by the National Ocean Economics Program. These estimates are derived from zip code and county level data. Overall, 9th District of Florida consists of 21% ocean economies in Orange County and 10% ocean economies in Polk County. For more information and definitions go to www.oceaneconomics.org



Ocean Economy Estimates

Sector	Employment	GDP
Construction - Marine	10	\$2,052,428
Living Resources - Marine (P)	9	\$609,143
Minerals - Offshore	D	D
Ship & Boat Building and Repair (P)	173	\$14,494,538
Tourism & Recreation - Coastal	0	\$0
Transportation - Marine	234	\$14,233,632
Total for 9 th District	426	\$31,389,741
Other	9,212	\$780,722,200

D = Disclosure issues prevent this data from being presented.

(P) = Only partial data of the sector is collected for the district portions of the counties because the sector is suppressed in one or more counties.

Total for 9th District = All the unsuppressed data in the 9th district are added up.

Other = This is the sum of suppressed sectors within the 9th district and the ocean economy in the non-district portions of the counties.

Illinois' 3rd Congressional District

Representative Daniel Lipinski

District Ocean Economy Profile

The Ocean Economy comprises 21 industries in six sectors. In 2012, the ocean economy 3rd District of Illinois is estimated to have **employed 11,943 people and generated \$787.7 million in contribution to the national Gross Domestic Product.**

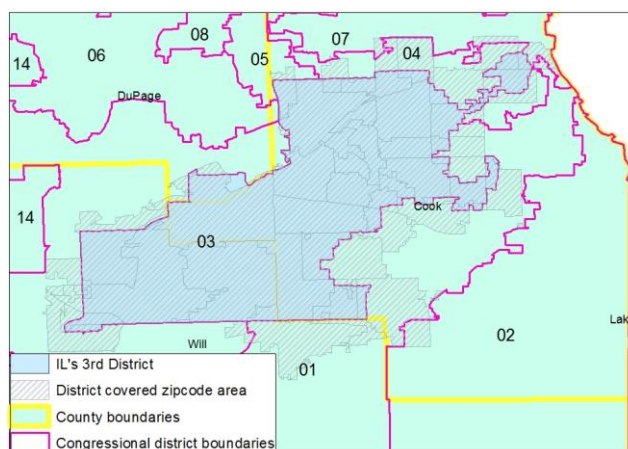
The largest sector by employment and output is coastal tourism & recreation, with 9,316 jobs in 2012 and \$587.9 million in GDP.



About these estimates

These estimates are drawn from the estimates of the ocean economy for Cook County by the National Ocean Economics Program. These estimates are derived from zip code and county level data. Overall, 3rd District of Illinois consists of 17% ocean economies in Cook County. For more information and definitions go to

www.oceaneconomics.org



Ocean Economy Estimates

Sector	Employment	GDP
Construction - Marine	60	\$8,025,327
Living Resources - Marine	69	\$5,648,433
Minerals - Offshore	8	\$1,126,370
Ship & Boat Building and Repair	0	\$0
Tourism & Recreation - Coastal	9,316	\$587,892,536
Transportation - Marine	2,491	\$184,957,753
Total for 3 rd District	11,943	\$787,650,419
Other	62,749	\$4,625,516,944

D = Disclosure issues prevent this data from being presented.

(P) = Only partial data of the sector is collected for the district portions of the counties because the sector is suppressed in one or more counties.

Total for 3rd District = All the unsuppressed data in the 3rd district are added up.

Other = This is the sum of suppressed sectors within the 3rd district and the ocean economy in the non-district portions of the counties.

Illinois' 11th Congressional District

Representative Bill Foster

District Ocean Economy Profile

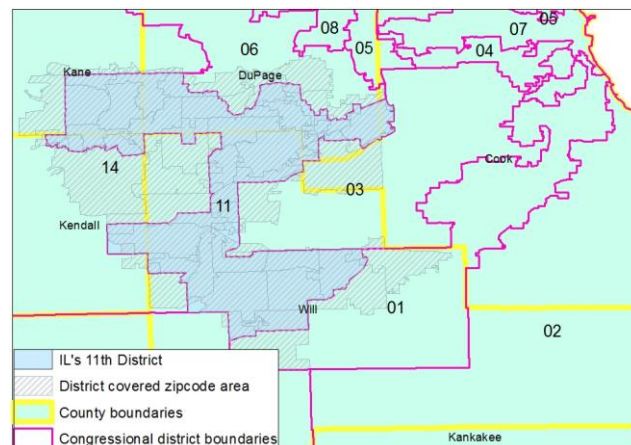
The Ocean Economy comprises 21 industries in six sectors. In 2012, the ocean economy 11th District of Illinois is estimated to have **employed 461 people and generated \$33.8 million in contribution to the national Gross Domestic Product.**

The largest sector by employment and output is marine transportation, with 297 jobs in 2012 and \$22.1 million in GDP.



About these estimates

These estimates are drawn from the estimates of the ocean economy for Cook County by the National Ocean Economics Program. These estimates are derived from zip code and county level data. Overall, 11th District of Illinois consists of 0.4% ocean economies in Cook County. For more information and definitions go to www.oceaneconomics.org



Ocean Economy Estimates

Sector	Employment	GDP
Construction - Marine	0	\$0
Living Resources - Marine	0	\$0
Minerals - Offshore	7	\$1,051,278
Ship & Boat Building and Repair	13	\$1,654,477
Tourism & Recreation - Coastal	143	\$9,027,605
Transportation - Marine	297	\$22,076,201
Total for 11 th District	461	\$33,809,562
Other	74,231	\$5,379,357,801

D = Disclosure issues prevent this data from being presented.

(P) = Only partial data of the sector is collected for the district portions of the counties because the sector is suppressed in one or more counties.

Total for 11th District = All the unsuppressed data in the 11th district are added up.

Other = This is the sum of suppressed sectors within the 11th district and the ocean economy in the non-district portions of the counties.

Illinois' 14th Congressional District

Representative Randy Hultgren

District Ocean Economy Profile

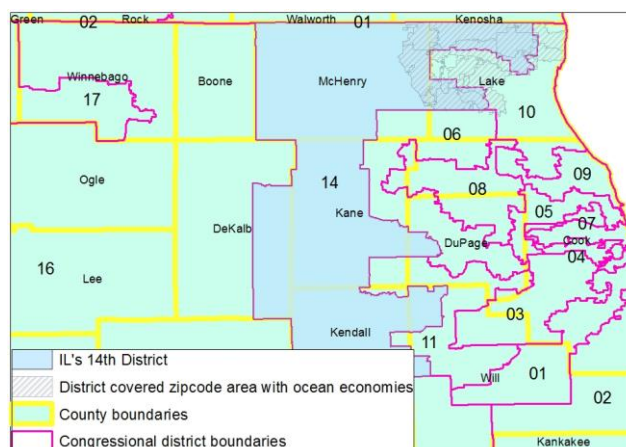
The Ocean Economy comprises 21 industries in six sectors. In 2012, the ocean economy 14th District of Illinois is estimated to have **employed 2,528 people and generated \$136.8 million in contribution to the national Gross Domestic Product.**

The largest sector by employment and output is coastal tourism & recreation, with 2,468 jobs in 2012 and \$131.0 million in GDP.



About these estimates

These estimates are drawn from the estimates of the ocean economy for Lake County by the National Ocean Economics Program. These estimates are derived from zip code and county level data. Overall, 14th District of Illinois consists of 38% ocean economies in Lake County. For more information and definitions go to www.oceaneconomics.org



Ocean Economy Estimates

Sector	Employment	GDP
Construction - Marine	16	\$1,454,130
Living Resources - Marine	D	D
Minerals - Offshore	D	D
Ship & Boat Building and Repair	D	D
Tourism & Recreation - Coastal	2,468	\$131,044,193
Transportation - Marine	43	\$4,334,322
Total for 14 th District	2,528	\$136,832,645
Other	4,800	\$329,397,297

D = Disclosure issues prevent this data from being presented.

(P) = Only partial data of the sector is collected for the district portions of the counties because the sector is suppressed in one or more counties.

Total for 14th District = All the unsuppressed data in the 14th district are added up.

Other = This is the sum of suppressed sectors within the 14th district and the ocean economy in the non-district portions of the counties.

Louisiana's 5th Congressional District

Representative Ralph Abraham

District Ocean Economy Profile

The Ocean Economy comprises 21 industries in six sectors. In 2012, the ocean economy 5th District of Louisiana is estimated to have **employed 6 people and generated \$4.1 million in contribution to the national Gross Domestic Product.**

The largest sector by employment and output is marine living resources, with 6 jobs in 2012 and \$4.1 million in GDP.



Ocean Economy Estimates

Sector	Employment	GDP
Construction - Marine	D	D
Living Resources - Marine	6	\$4,065,534
Minerals - Offshore	D	D
Ship & Boat Building and Repair	0	\$0
Tourism & Recreation - Coastal	0	\$0
Transportation - Marine	D	D
Total for 5 th District	6	\$4,065,534
Other	1,392	\$120,170,515

D = Disclosure issues prevent this data from being presented.

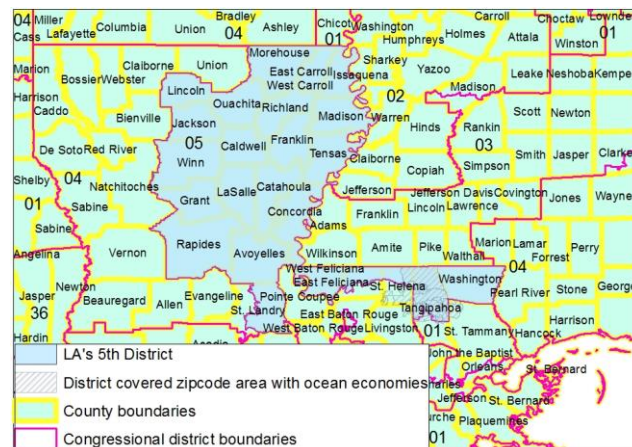
(P) = Only partial data of the sector is collected for the district portions of the counties because the sector is suppressed in one or more counties.

Total for 5th District = All the unsuppressed data in the 5th district are added up.

Other = This is the sum of suppressed sectors within the 5th district and the ocean economy in the non-district portions of the counties.

About these estimates

These estimates are drawn from the estimates of the ocean economy for Tangipahoa County by the National Ocean Economics Program. These estimates are derived from zip code and county level data. Overall, 5th District of Louisiana consists of 65% ocean economies in Tangipahoa County. For more information and definitions go to www.oceaneconomics.org



Massachusetts' 5th Congressional District

Representative Katherine Clark

District Ocean Economy Profile

The Ocean Economy comprises 21 industries in six sectors. In 2012, the ocean economy 5th District of Massachusetts is estimated to have **employed 5,095 people and generated \$1.09 billion in contribution to the national Gross Domestic Product.**

The largest sector by employment and output is marine transportation, with 4,060 jobs in 2012 and \$1.03 billion in GDP.

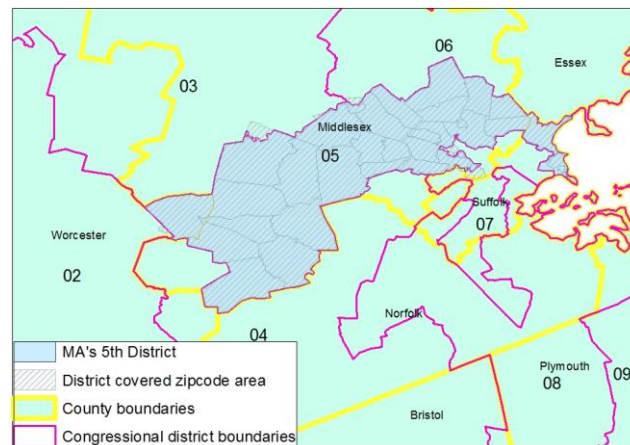


About these estimates

These estimates are drawn from the estimates of the ocean economy for Middlesex County and Suffolk County by the National Ocean

Economics Program. These estimates are derived from zip code and county level data. Overall, 5th District of Massachusetts consists of 51% ocean economies in Middlesex County and 3% ocean economies in Suffolk County. For more information and definitions go to

www.oceaneconomics.org



Ocean Economy Estimates

Sector	Employment	GDP
Construction - Marine	331	\$13,250,586
Living Resources - Marine	37	\$1,618,042
Minerals - Offshore (P)	39	\$7,592,646
Ship & Boat Building and Repair	D	D
Tourism & Recreation - Coastal	627	\$37,742,453
Transportation - Marine	4,060	\$1,025,565,346
Total for 5 th District	5,095	\$1,085,769,072
Other	21,247	\$1,720,778,680

D = Disclosure issues prevent this data from being presented.

(P) = Only partial data of the sector is collected for the district portions of the counties because the sector is suppressed in one or more counties.

Total for 5th District = All the unsuppressed data in the 5th district are added up.

Other = This is the sum of suppressed sectors within the 5th district and the ocean economy in the non-district portions of the counties.

Maryland's 4th Congressional District

Representative Donna Edwards

District Ocean Economy Profile

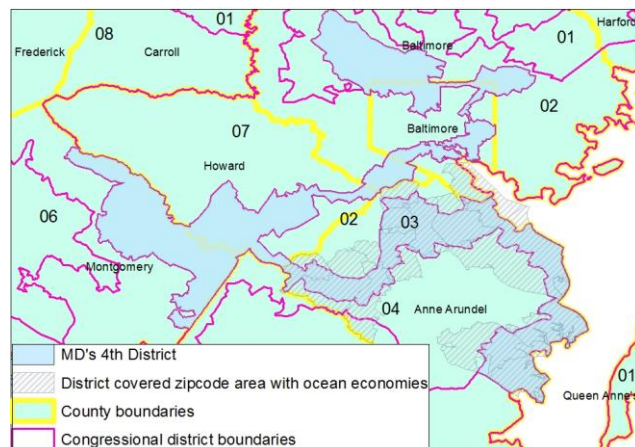
The Ocean Economy comprises 21 industries in six sectors. In 2012, the ocean economy 4th District of Maryland is estimated to have **employed 13,991 people and generated \$620.2 million in contribution to the national Gross Domestic Product.**

The largest sector by employment and output is coastal tourism & recreation, with 12,809 jobs in 2012 and \$521.7 million in GDP.



About these estimates

These estimates are drawn from the estimates of the ocean economy for Anne Arundel County by the National Ocean Economics Program. These estimates are derived from zip code and county level data. Overall, 4th District of Maryland consists of 78% ocean economies in Anne Arundel County. For more information and definitions go to www.oceaneconomics.org



Ocean Economy Estimates

Sector	Employment	GDP
Construction - Marine	658	\$57,706,221
Living Resources - Marine	90	\$5,048,872
Minerals - Offshore	D	D
Ship & Boat Building and Repair	52	\$4,439,220
Tourism & Recreation - Coastal	12,809	\$521,710,983
Transportation - Marine	381	\$31,319,814
Total for 4 th District	13,991	\$620,225,111
Other	13,982	\$2,152,771,937

D = Disclosure issues prevent this data from being presented.

(P) = Only partial data of the sector is collected for the district portions of the counties because the sector is suppressed in one or more counties.

Total for 4th District = All the unsuppressed data in the 4th district are added up.

Other = This is the sum of suppressed sectors within the 4th district and the ocean economy in the non-district portions of the counties.

Michigan's 4th Congressional District

Representative John Moolenaar

District Ocean Economy Profile

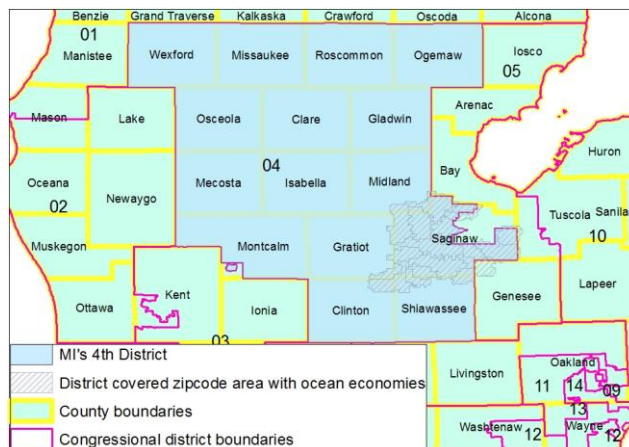
The Ocean Economy comprises 21 industries in six sectors. In 2012, the ocean economy 4th District of Michigan is estimated to have **employed 38 people and generated \$3.0 million in contribution to the national Gross Domestic Product.**

The largest sector by employment and output is marine transportation, with 38 jobs in 2012 and \$3.0 million in GDP.



About these estimates

These estimates are drawn from the estimates of the ocean economy for Saginaw County by the National Ocean Economics Program. These estimates are derived from zip code and county level data. Overall, 4th District of Michigan consists of 79% ocean economies in Saginaw County. For more information and definitions go to www.oceaneconomics.org



Ocean Economy Estimates

Sector	Employment	GDP
Construction - Marine	D	D
Living Resources - Marine	D	D
Minerals - Offshore	D	D
Ship & Boat Building and Repair	-	\$0
Tourism & Recreation - Coastal	-	\$0
Transportation - Marine	38	\$2,988,166
Total for 4 th District	38	\$2,988,166
Other	75	\$5,879,941

D = Disclosure issues prevent this data from being presented.

(P) = Only partial data of the sector is collected for the district portions of the counties because the sector is suppressed in one or more counties.

Total for 4th District = All the unsuppressed data in the 4th district are added up.

Other = This is the sum of suppressed sectors within the 4th district and the ocean economy in the non-district portions of the counties.

New York's 20th Congressional District

Representative Paul Tonko

District Ocean Economy Profile

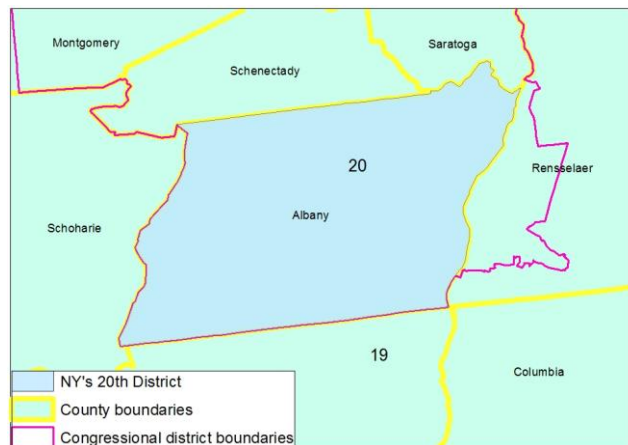
The Ocean Economy comprises 21 industries in six sectors. In 2012, the ocean economy 20th District of New York is estimated to have **employed 373 people and generated \$31.5 million in contribution to the national Gross Domestic Product.**

The largest sector by employment and output is marine transportation, with 373 jobs in 2012 and \$31.5 million in GDP.



About these estimates

These estimates are drawn from the estimates of the ocean economy for Albany County by the National Ocean Economics Program. These estimates are derived from zip code and county level data. Overall, 20th District of New York consists of 100% ocean economies in Albany County. For more information and definitions go to www.oceaneconomics.org



Ocean Economy Estimates

Sector	Employment	GDP
Construction - Marine	D	D
Living Resources - Marine	D	D
Minerals - Offshore	D	D
Ship & Boat Building and Repair	D	D
Tourism & Recreation - Coastal	-	\$0
Transportation - Marine	373	\$31,514,179
Total for 20 th District	373	\$31,514,179
Other	373	\$31,514,179

D = Disclosure issues prevent this data from being presented.

(P) = Only partial data of the sector is collected for the district portions of the counties because the sector is suppressed in one or more counties.

Total for 20th District = All the unsuppressed data in the 20th district are added up.

Other = This is the sum of suppressed sectors within the 20th district and the ocean economy in the non-district portions of the counties.

Oregon's 1st Congressional District

Representative Suzanne Bonamici

District Ocean Economy Profile

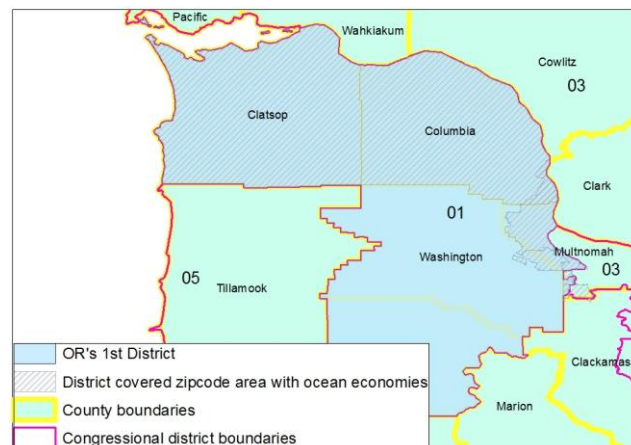
The Ocean Economy comprises 21 industries in six sectors. In 2012, the ocean economy 1st District of Oregon is estimated to have **employed 6,819 people and generated \$292.4 million in contribution to the national Gross Domestic Product.**

The largest sector by employment and output is coastal tourism & recreation, with 5,598 jobs in 2012 and \$182.6 million in GDP.



About these estimates

These estimates are drawn from the estimates of the ocean economy for Clatsop County, Columbia County and Multnomah County by the National Ocean Economics Program. These estimates are derived from zip code and county level data. Overall, 1st District of Oregon consists of 100% ocean economies in Clatsop County, 100% ocean economies in Columbia County and 15% ocean economies in Multnomah County. For more information and definitions go to www.oceaneconomics.org



Ocean Economy Estimates

Sector	Employment	GDP
Construction - Marine (P)	209	\$26,490,730
Living Resources - Marine (P)	600	\$42,553,361
Minerals - Offshore (P)	0	\$0
Ship & Boat Building and Repair	D	D
Tourism & Recreation - Coastal	5,598	\$182,643,769
Transportation - Marine (P)	412	\$40,722,851
Total for 1 st District	6,819	\$292,410,711
Other	11,566	\$713,369,225

D = Disclosure issues prevent this data from being presented.

(P) = Only partial data of the sector is collected for the district portions of the counties because the sector is suppressed in one or more counties.

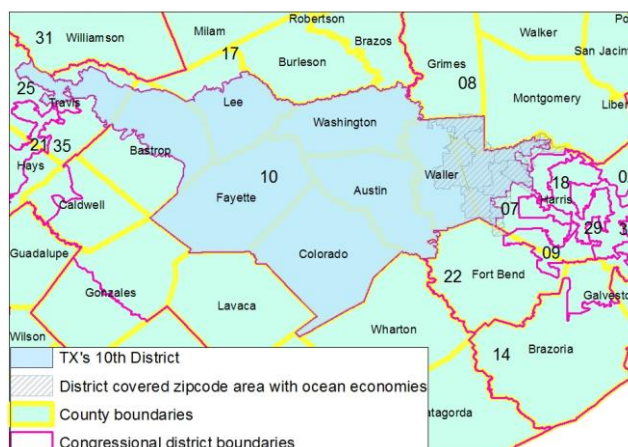
Total for 1st District = All the unsuppressed data in the 1st district are added up.

Other = This is the sum of suppressed sectors within the 1st district and the ocean economy in the non-district portions of the counties.

Representative Michael McCaul

The Ocean Economy comprises 21 industries in six sectors. In 2012, the ocean economy 10th District of Texas is estimated to have **employed 1,918 people and generated \$1.21 billion in contribution to the national Gross Domestic Product.**

These estimates are drawn from the estimates of the ocean economy for Harris County by the National Ocean Economics Program. These estimates are derived from zip code and county level data. Overall, 10th District of Texas consists of 5% ocean economies in Harris County. For more information and definitions go to www.oceaneconomics.org



Sector	Employment	GDP
Construction - Marine	74	\$11,835,414
Living Resources - Marine	0	\$0
Minerals - Offshore	961	\$1,144,751,975
Ship & Boat Building and Repair	D	D
Tourism & Recreation - Coastal	618	\$20,019,368
Transportation - Marine	265	\$32,131,590
Total for 10 th District	1,918	\$1,208,738,347
Other	118,426	\$109,995,649,688

Other = This is the sum of suppressed sectors within the 10th district and the ocean economy in the non-district portions of the counties.

Texas' 14th Congressional District

Representative Randy Weber

District Ocean Economy Profile

The Ocean Economy comprises 21 industries in six sectors. In 2012, the ocean economy 14th District of Texas is estimated to have **employed 15,365 people and generated \$1.07 billion in contribution to the national Gross Domestic Product.**

The largest sector by employment is coastal tourism & recreation, with 12,317 jobs in 2012 and the largest sector by output is offshore minerals, with \$431.7 million in GDP.



Ocean Economy Estimates

Sector	Employment	GDP
Construction - Marine (P)	374	\$56,442,770
Living Resources - Marine (P)	526	\$33,975,879
Minerals - Offshore (P)	605	\$431,691,593
Ship & Boat Building and Repair	D	D
Tourism & Recreation - Coastal	12,317	\$417,699,840
Transportation - Marine (P)	1,543	\$132,957,862
Total for 14 th District	15,365	\$1,072,767,943
Other	5,559	\$1,709,227,301

D = Disclosure issues prevent this data from being presented.

(P) = Only partial data of the sector is collected for the district portions of the counties because the sector is suppressed in one or more counties.

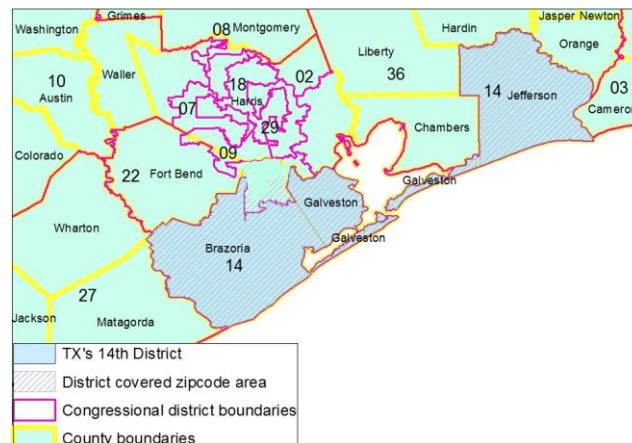
Total for 14th District = All the unsuppressed data in the 14th district are added up.

Other = This is the sum of suppressed sectors within the 14th district and the ocean economy in the non-district portions of the counties.

About these estimates

These estimates are drawn from the estimates of the ocean economy for Brazoria County, Galveston County and Jefferson County by the National Ocean Economics Program. These estimates are derived from zip code and county level data. Overall, 14th District of Texas consists of 41% ocean economies in Brazoria County, 100% ocean economies in Galveston County and 100% ocean economies in Jefferson County. For more information and definitions go to

www.oceaneconomics.org



Texas' 36th Congressional District

Representative Brian Babin

District Ocean Economy Profile

The Ocean Economy comprises 21 industries in six sectors. In 2012, the ocean economy 36th District of Texas is estimated to have **employed 7,185 people and generated \$2.47 billion in contribution to the national Gross Domestic Product.**

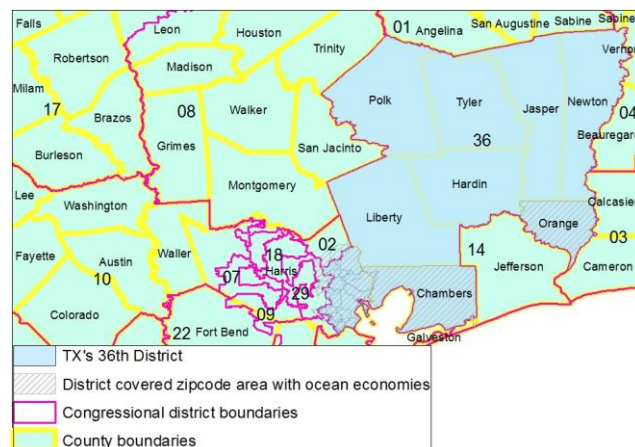
The largest sector by employment is marine transportation, with 2,504 jobs in 2012 and the largest sector by output is offshore minerals, with \$1.88 billion in GDP.



About these estimates

These estimates are drawn from the estimates of the ocean economy for Chambers County, Harris County and Orange County by the National Ocean Economics Program. These estimates are derived from zip code and county level data. Overall, 36th District of Texas consists of 100% ocean economies in Chambers County, 12% ocean economies in Harris County and 100% ocean economies in Orange County. For more information and definitions go to

www.oceaneconomics.org



Ocean Economy Estimates

Sector	Employment	GDP
Construction - Marine (P)	988	\$158,526,970
Living Resources - Marine (P)	14	\$1,307,082
Minerals - Offshore	1,621	\$1,875,068,419
Ship & Boat Building and Repair (P)	794	\$94,262,791
Tourism & Recreation - Coastal	1,264	\$39,310,566
Transportation - Marine (P)	2,504	\$303,075,355
Total for 36 th District	7,185	\$2,471,551,183
Other	115,797	\$109,271,638,764

D = Disclosure issues prevent this data from being presented.

(P) = Only partial data of the sector is collected for the district portions of the counties because the sector is suppressed in one or more counties.

Total for 36th District = All the unsuppressed data in the 36th district are added up.

Other = This is the sum of suppressed sectors within the 36th district and the ocean economy in the non-district portions of the counties.

Virginia's 8th Congressional District

Representative Donald Beyer

District Ocean Economy Profile

The Ocean Economy comprises 21 industries in six sectors. In 2012, the ocean economy 8th District of Virginia is estimated to have **employed 57 people and generated \$6.7 million in contribution to the national Gross Domestic Product.**

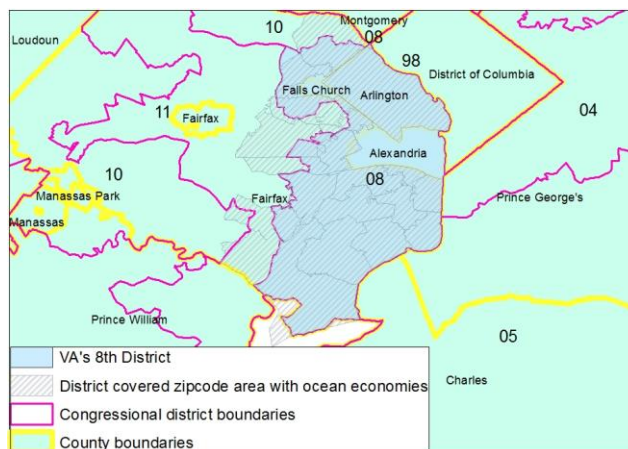
The largest sector by employment and output is marine construction, with 31 jobs in 2012 and \$4.6 million in GDP.



About these estimates

These estimates are drawn from the estimates of the ocean economy for Arlington County and Fairfax County by the National Ocean Economics Program. These estimates are derived from zip code and county level data. Overall, 8th District of Virginia consists of 100% ocean economies in Arlington County and 43% ocean economies in Fairfax County. For more information and definitions go to

www.oceaneconomics.org



Ocean Economy Estimates

Sector	Employment	GDP
Construction - Marine	31	\$4,599,976
Living Resources - Marine	D	D
Minerals - Offshore	D	D
Ship & Boat Building and Repair	D	D
Tourism & Recreation - Coastal	0	\$0
Transportation - Marine (P)	26	\$2,060,198
Total for 8 th District	57	\$6,660,174
Other	3,488	\$674,844,038

D = Disclosure issues prevent this data from being presented.

(P) = Only partial data of the sector is collected for the district portions of the counties because the sector is suppressed in one or more counties.

Total for 8th District = All the unsuppressed data in the 8th district are added up.

Other = This is the sum of suppressed sectors within the 8th district and the ocean economy in the non-district portions of the counties.

Virginia's 10th Congressional District

Representative Barbara Comstock

District Ocean Economy Profile

The Ocean Economy comprises 21 industries in six sectors. In 2012, the ocean economy 10th District of Virginia is estimated to have **employed 1,046 people and generated \$126.2 million in contribution to the national Gross Domestic Product.**

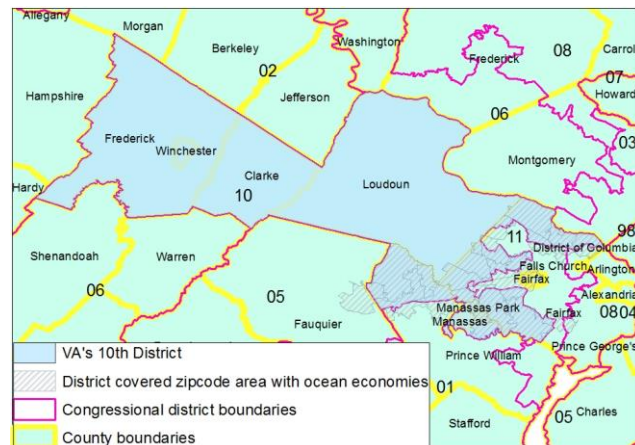
The largest sector by employment and output is marine construction, with 803 jobs in 2012 and \$107.1 million in GDP.



About these estimates

These estimates are drawn from the estimates of the ocean economy for Fairfax County and Prince William County by the National Ocean Economics Program. These estimates are derived from zip code and county level data. Overall, 10th District of Virginia consists of 51% ocean economies in Fairfax County and 33% ocean economies in Prince William County. For more information and definitions go to

www.oceaneconomics.org



Ocean Economy Estimates

Sector	Employment	GDP
Construction - Marine (P)	803	\$107,139,827
Living Resources - Marine	D	D
Minerals - Offshore	D	D
Ship & Boat Building and Repair	D	D
Tourism & Recreation - Coastal	0	\$0
Transportation - Marine (P)	243	\$19,091,168
Total for 10 th District	1,046	\$126,230,995
Other	2,537	\$540,674,616

D = Disclosure issues prevent this data from being presented.

(P) = Only partial data of the sector is collected for the district portions of the counties because the sector is suppressed in one or more counties.

Total for 10th District = All the unsuppressed data in the 10th district are added up.

Other = This is the sum of suppressed sectors within the 10th district and the ocean economy in the non-district portions of the counties.

Wisconsin's 5th Congressional District

Representative James Sensenbrenner

District Ocean Economy Profile

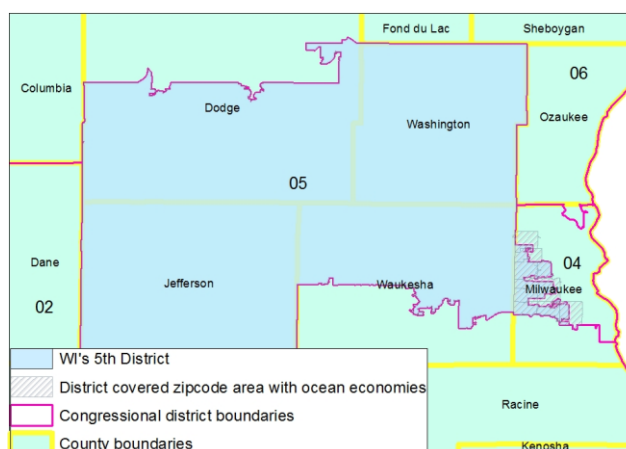
The Ocean Economy comprises 21 industries in six sectors. In 2012, the ocean economy 5th District of Wisconsin is estimated to have **employed 4,095 people and generated \$154.5 million in contribution to the national Gross Domestic Product.**

The largest sector by employment and output is coastal tourism & recreation, with 3,688 jobs in 2012 and \$128.4 million in GDP.



About these estimates

These estimates are drawn from the estimates of the ocean economy for Milwaukee County by the National Ocean Economics Program. These estimates are derived from zip code and county level data. Overall, 5th District of Wisconsin consists of 33% ocean economies in Milwaukee County. For more information and definitions go to www.oceaneconomics.org



Ocean Economy Estimates

Sector	Employment	GDP
Construction - Marine	40	\$4,557,059
Living Resources - Marine	D	D
Minerals - Offshore	D	D
Ship & Boat Building and Repair	D	D
Tourism & Recreation - Coastal	3,688	\$128,364,416
Transportation - Marine (P)	367	\$21,627,781
Total for 5 th District	4,095	\$154,549,257
Other	8,913	\$368,372,044

D = Disclosure issues prevent this data from being presented.

(P) = Only partial data of the sector is collected for the district portions of the counties because the sector is suppressed in one or more counties.

Total for 5th District = All the unsuppressed data in the 5th district are added up.

Other = This is the sum of suppressed sectors within the 5th district and the ocean economy in the non-district portions of the counties.