

Kirk HVAC System Operation

Thermostat components.



Room temperature

Occupancy Light

Set point Adjustment

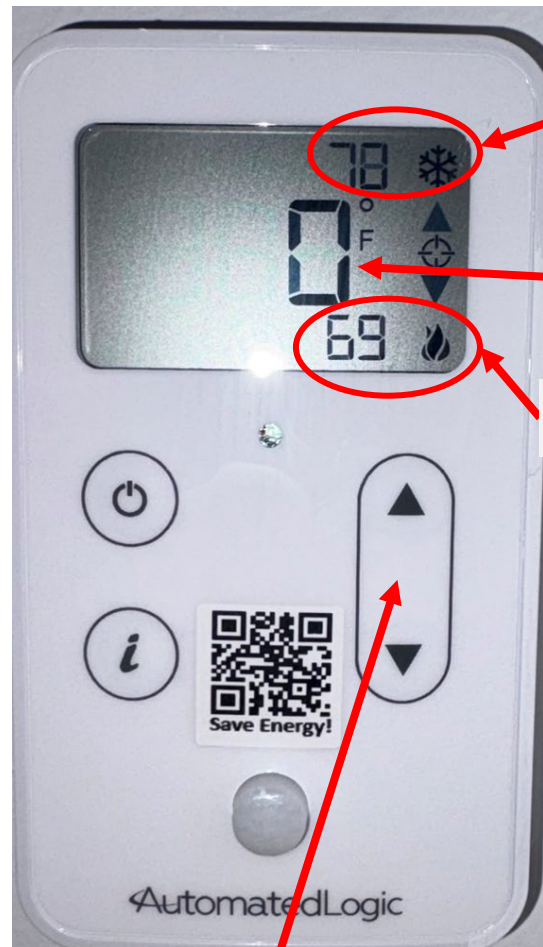
Occupancy Button

Information button scrolls through outdoor air temperature and room temperature set points. (Notice the cloud/sun icon)



Motion sensor for turning on outdoor air ventilation and placing the space in occupied mode.

Follow these steps to adjust the temperature set point.



Cooling set point

Current offset

Heating set point

Pressing the up or down arrows will bring up the current set points.



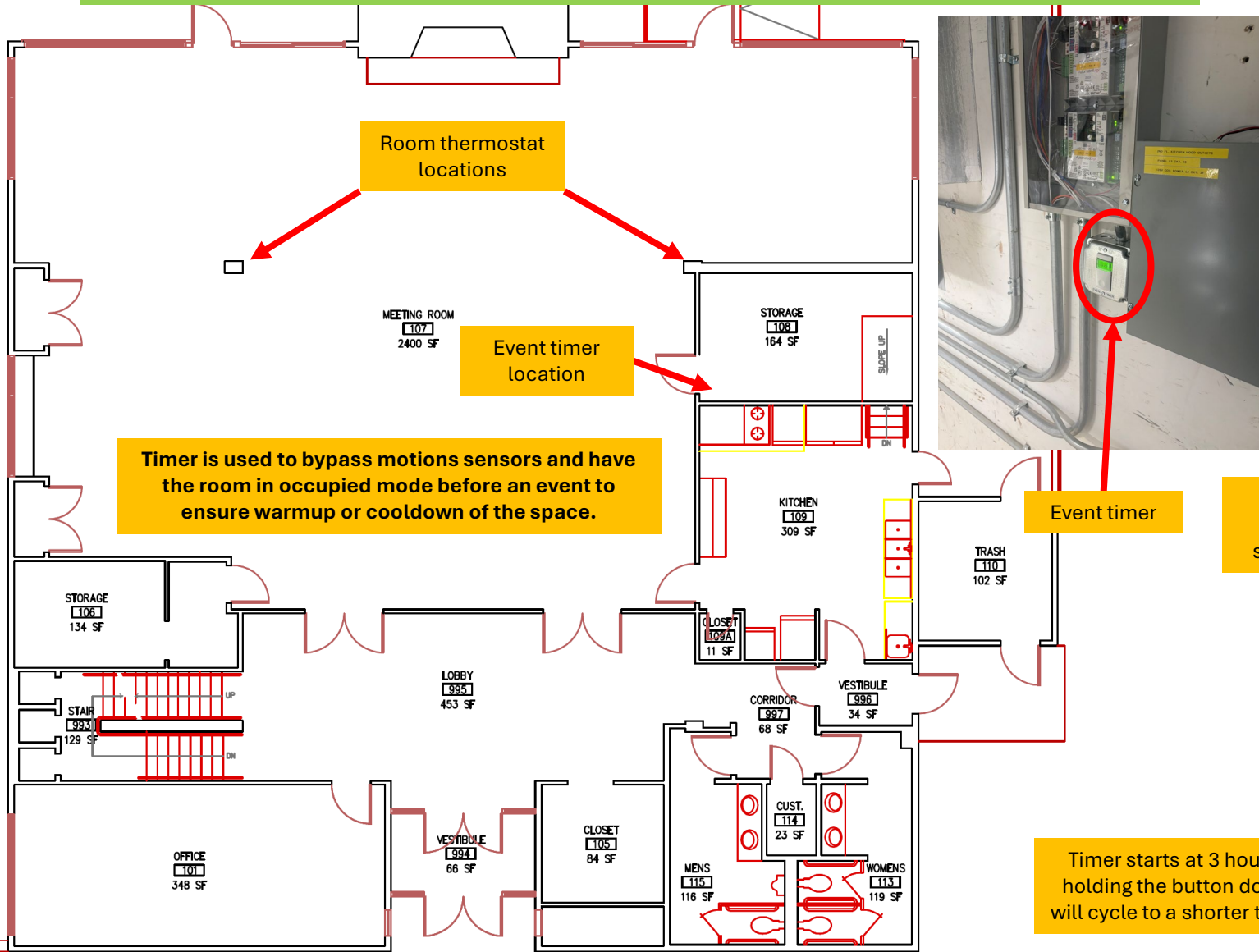
For occupied times, cooling set point will be adjustable from a low of 72 to 78 degrees and heating set point will be adjustable from a low of 66 to 72 degrees .

You can adjust the offset up or down by 3 degrees.

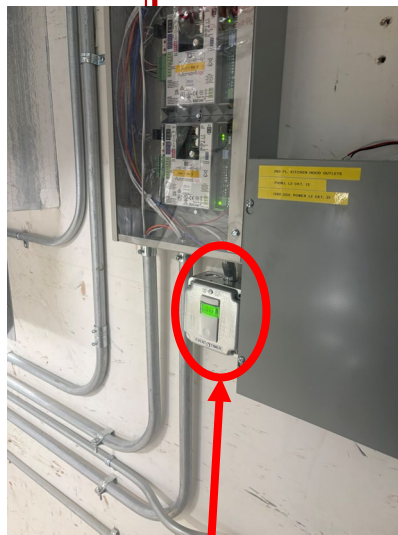


For unoccupied times, cooling set point will be 85 degrees and heating set point will be 60 degrees.

Kirk main space event timer and thermostat locations.



Timer is used to bypass motions sensors and have the room in occupied mode before an event to ensure warmup or cooldown of the space.



Event timer



Push the button to start timer

Timer starts at 3 hours; holding the button down will cycle to a shorter time.

