

CHERRY

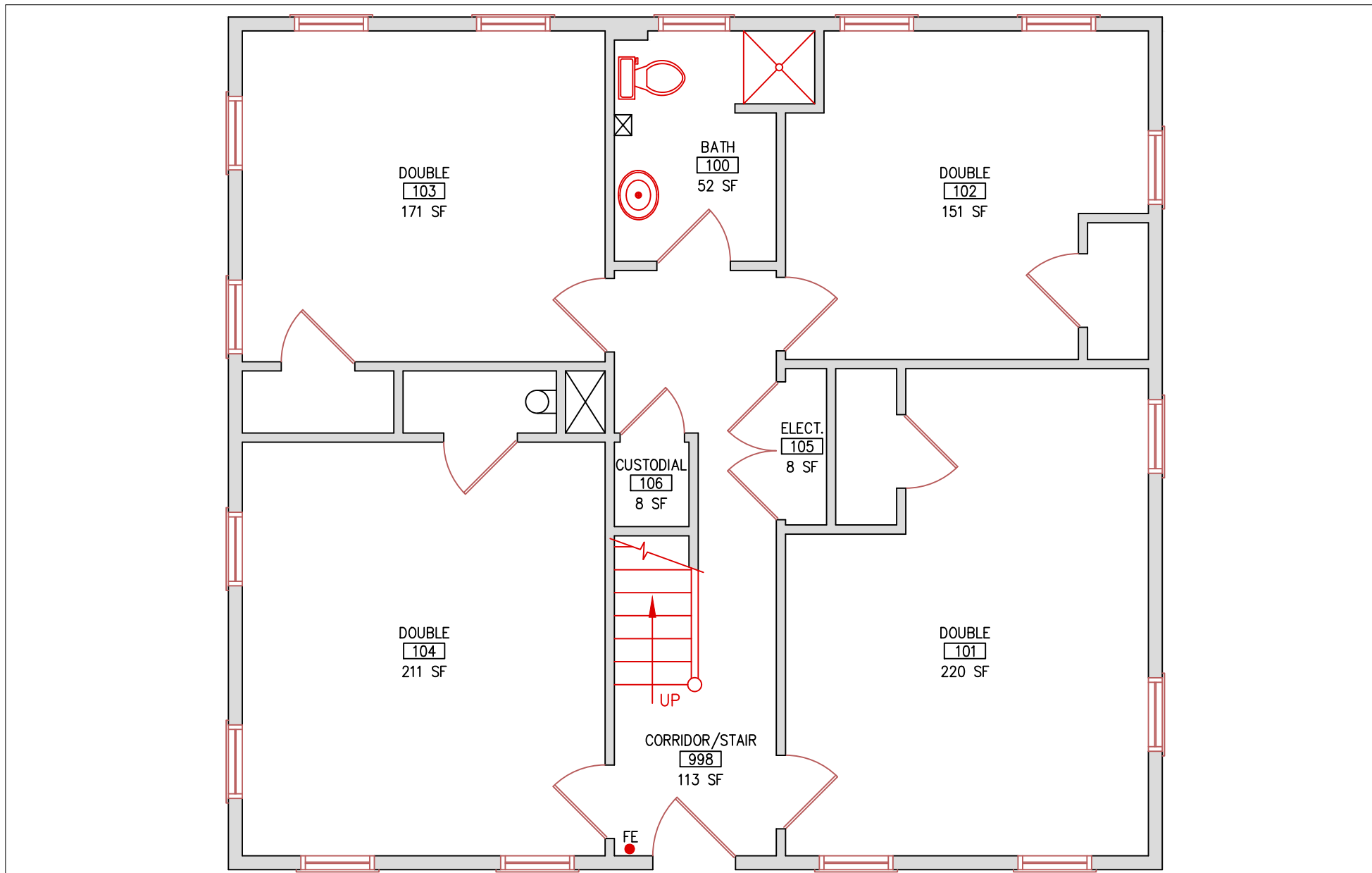
FIRST FLOOR

FIRST FLOOR BED COUNT:
DOUBLES: 4 (8)

TOTAL CAPACITY = 8

Total Capacity (1st & 2nd Floors) = 16

DOUBLE = 2 twin beds



CHERRY

SECOND FLOOR

SECOND FLOOR BED COUNT:
DOUBLES: 4 (8)

TOTAL CAPACITY = 8

Total Capacity (1st & 2nd Floors) = 16

DOUBLE = 2 twin beds

