

MAPLE

FIRST FLOOR

FIRST FLOOR BED COUNT:

DOUBLE: 2 (4)

DOUBLE - FT: 2 (6)

Total Capacity (1st, 2nd, 3rd & 4th Floors) = 28

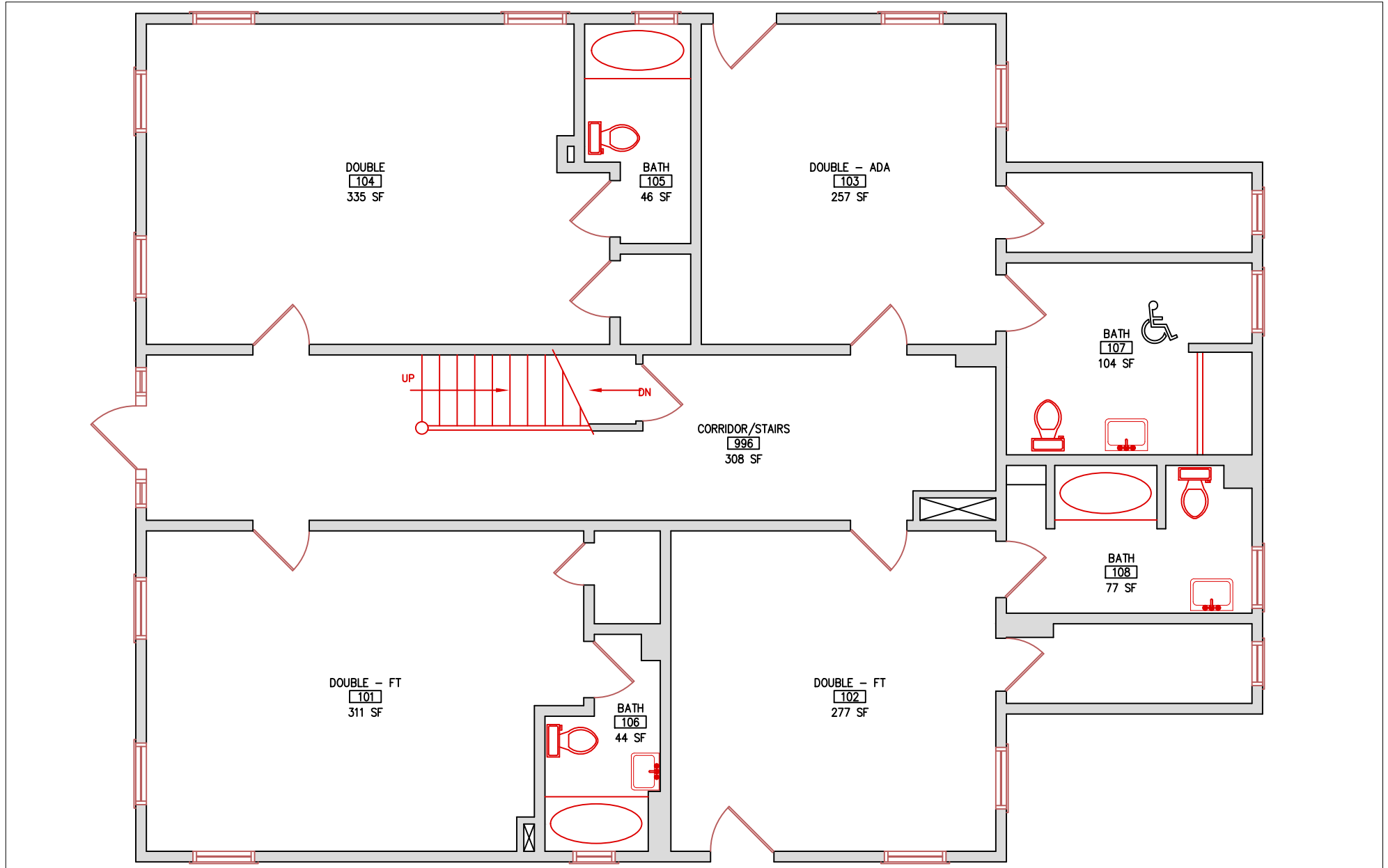
Total Capacity (1st, 2nd, 3rd & 4th Floors if 2 in full beds) = 37

DOUBLE = 2 twin beds

DOUBLE - FT = 1 full bed & 1 twin bed

ADA = handicap accessible

TOTAL CAPACITY = 8 (10 if 2 in full bed)



MAPLE

SECOND FLOOR

SECOND FLOOR BED COUNT:

DOUBLE: 2 (4)

DOUBLE - FT: 2 (6)

Total Capacity (1st, 2nd, 3rd & 4th Floors) = 28

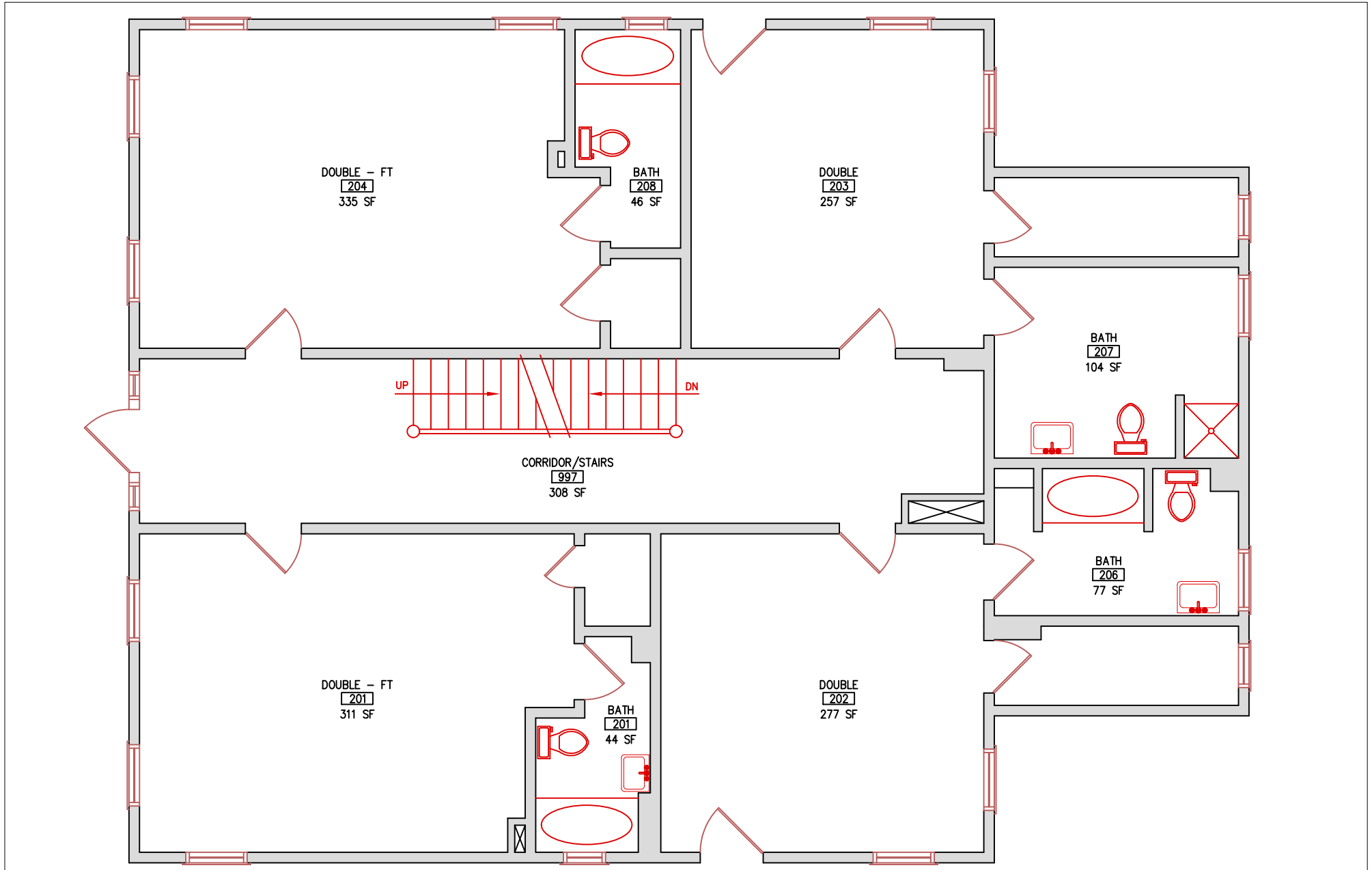
Total Capacity (1st, 2nd, 3rd & 4th Floors if 2 in full beds) = 37

DOUBLE = 2 twin beds

DOUBLE - FT = 1 full bed & 1 twin bed

ADA = handicap accessible

TOTAL CAPACITY = 8 (10 if 2 in full bed)



MAPLE

THIRD FLOOR

THIRD FLOOR BED COUNT:

DOUBLE: 2 (4)

DOUBLE - FT: 2 (6)

TOTAL CAPACITY = 8 (10 if 2 in full bed)

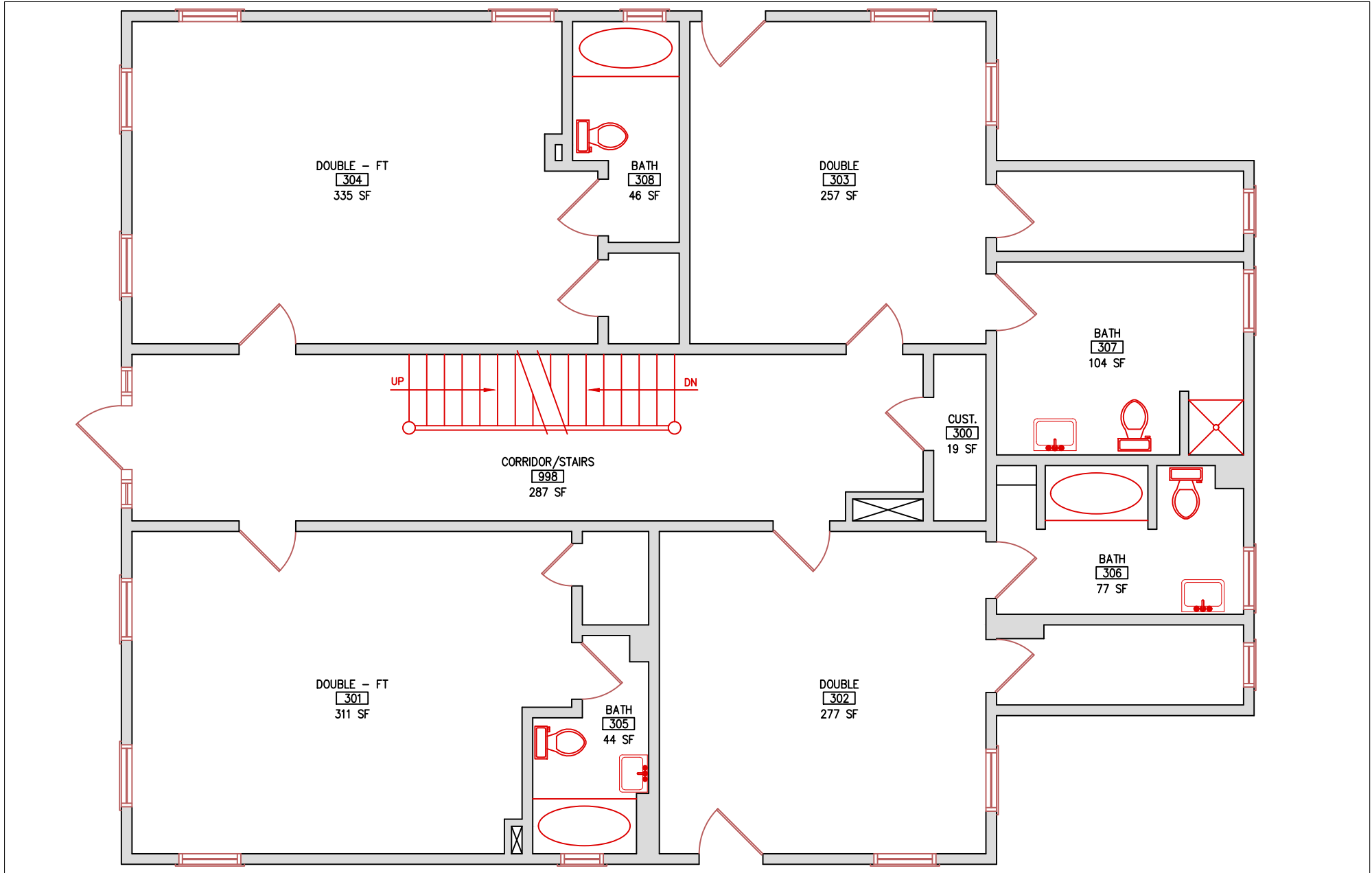
Total Capacity (1st, 2nd, 3rd & 4th Floors) = 28

Total Capacity (1st, 2nd, 3rd & 4th Floors if 2 in full beds) = 37

DOUBLE = 2 twin beds

DOUBLE - FT = 1 full bed & 1 twin bed

ADA = handicap accessible



MAPLE

FOURTH FLOOR

FOURTH FLOOR BED COUNT:

SINGLE: 1

FULL: 3 (6)

TOTAL CAPACITY = 4 (7 if 2 in full bed)

Total Capacity (1st, 2nd, 3rd & 4th Floors) = 28

Total Capacity (1st, 2nd, 3rd & 4th Floors if 2 in full beds) = 37

DOUBLE = 2 twin beds

DOUBLE - FT = 1 full bed & 1 twin bed

ADA = handicap accessible

