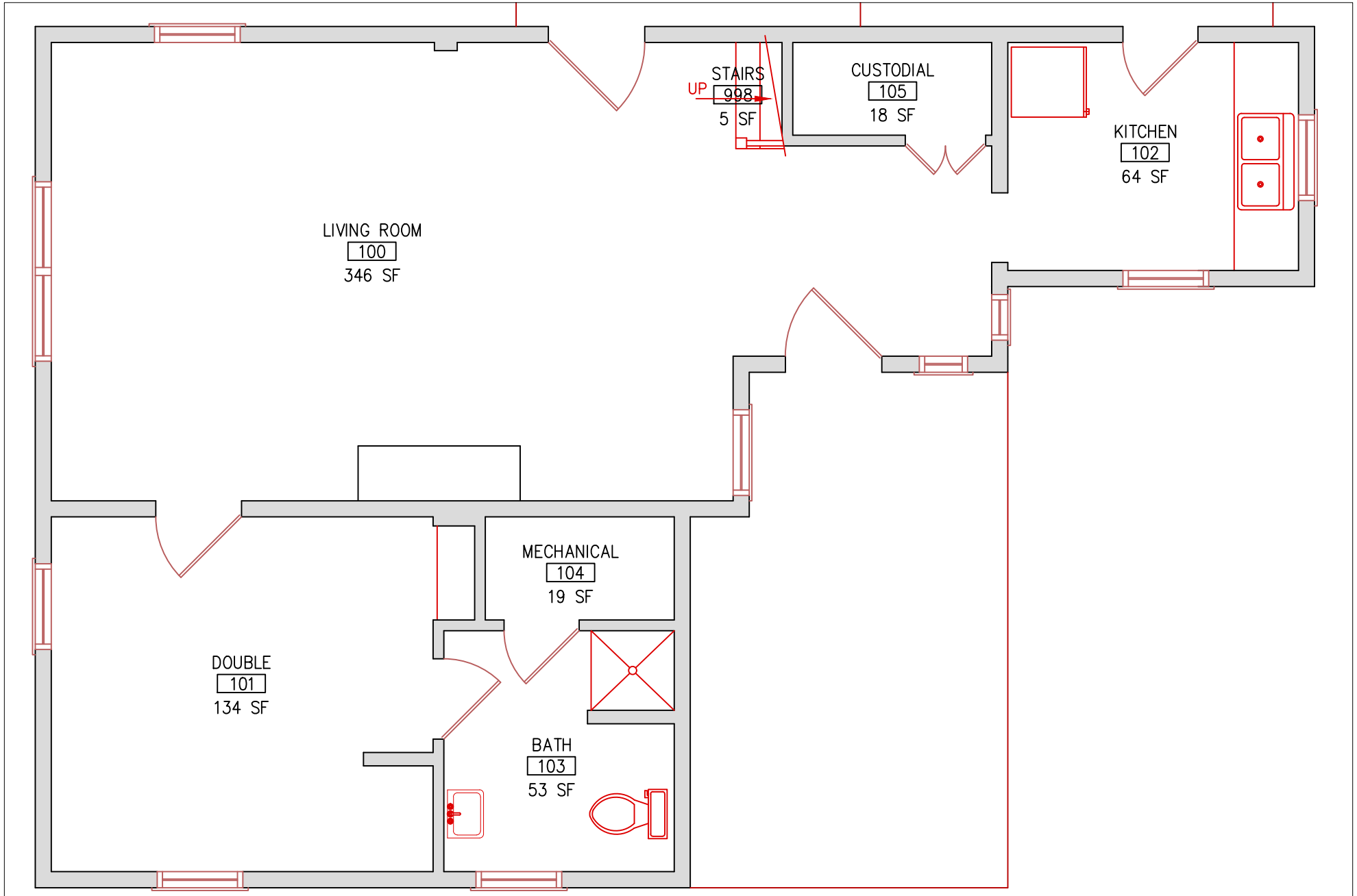


MARIS

FIRST FLOOR

FIRST FLOOR BED COUNT:
DOUBLE: 1 (2)
TOTAL CAPACITY = 2

Total Capacity (1st & 2nd Floors) = 6
Total Capacity (1st & 2nd Floors with 2 in full bed) = 7
SINGLE - 1 twin bed
DOUBLE = 2 twin beds
FULL = 1 full size bed



MARIS

SECOND FLOOR

SECOND FLOOR BED COUNT:

DOUBLE: 1 (2)

FULL: 1 (2)

SINGLE: 1

Total Capacity (1st & 2nd Floors) = 6

Total Capacity (1st & 2nd Floors with 2 in full bed) = 7

SINGLE - 1 twin bed

DOUBLE = 2 twin beds

FULL = 1 full size bed

TOTAL CAPACITY = 4 (5 if 2 in full bed)

