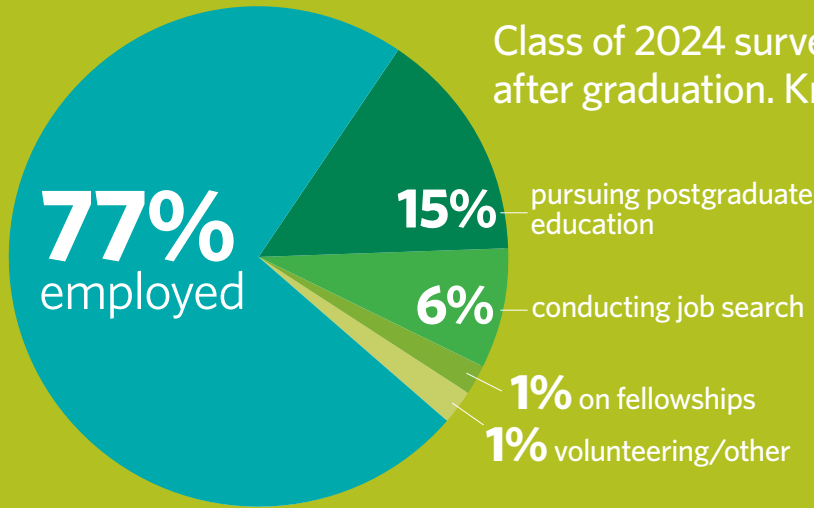


WHERE MIDDLEBURY GRADUATES GO

Class of 2024 surveyed six months after graduation. Knowledge rate 98%.



TOP EMPLOYERS

Accenture
Massachusetts General Hospital
Goldman Sachs
Bank of America
Morgan Stanley
Analysis Group
Boston Children's Hospital
Chestnut Partners
RBC Capital Markets
University of Pennsylvania
Ascend Analytics
Barclays
BCE Consulting
Blackrock
Microsoft
Peace Corps
Suffolk Construction

TOP GRADUATE SCHOOLS

Middlebury Institute of International Studies
Dartmouth College
Cornell University
Boston College
Yale University
Duke University
Johns Hopkins University

TOP CAREER FIELDS

18% financial services
15% science and health care
14% education, social impact, and international development
10% technology
9% arts, media, and communications
8% consulting
8% government, law, and policy
7% environment, energy, and agriculture

Please note percentages do not reflect industry overlap (e.g., environmental law, social impact investing, etc.)



Center for Careers
and Internships
at Middlebury

Kitchel House, 152 College Street
go.middlebury.edu/cci • cci@middlebury.edu
802-443-5100 • [in](https://www.linkedin.com/company/middCCI) [ig](https://www.instagram.com/middCCI) @middCCI

THE CENTER FOR CAREERS AND INTERNSHIPS

LET'S EXPLORE WHAT'S NEXT!

- **INDIVIDUALIZED ADVISING**—we meet you where you are in the process
- **EMPLOYER OUTREACH AND DEVELOPMENT**—we connect you with employers and alumni in all fields and industries
- **ACADEMICS**—we work with academic departments to connect liberal arts learning to postgraduate goals

JOBS AND INTERNSHIPS

\$1,000,000 in internship funding support

80,000 opportunities in our Handshake database

175 info sessions and sponsored events

85%+ students complete at least one internship

WHO WE ARE

6 career advisors with field-specific expertise

13 peer career advisors and student ambassadors

14 total staff

300+ alumni partners collaborating in custom programming

7,000+ alumni Midd2Midd volunteers

AROUND CAMPUS

2,500 program attendees

3,000 drop-ins and appointments with advisors

80 events and programs

94% of the class of 2024 engaged with CCI

77% of all students engaged with CCI last academic year