

# Tamarack

## FIRST FLOOR

FIRST FLOOR BED COUNT:

SINGLE: 1

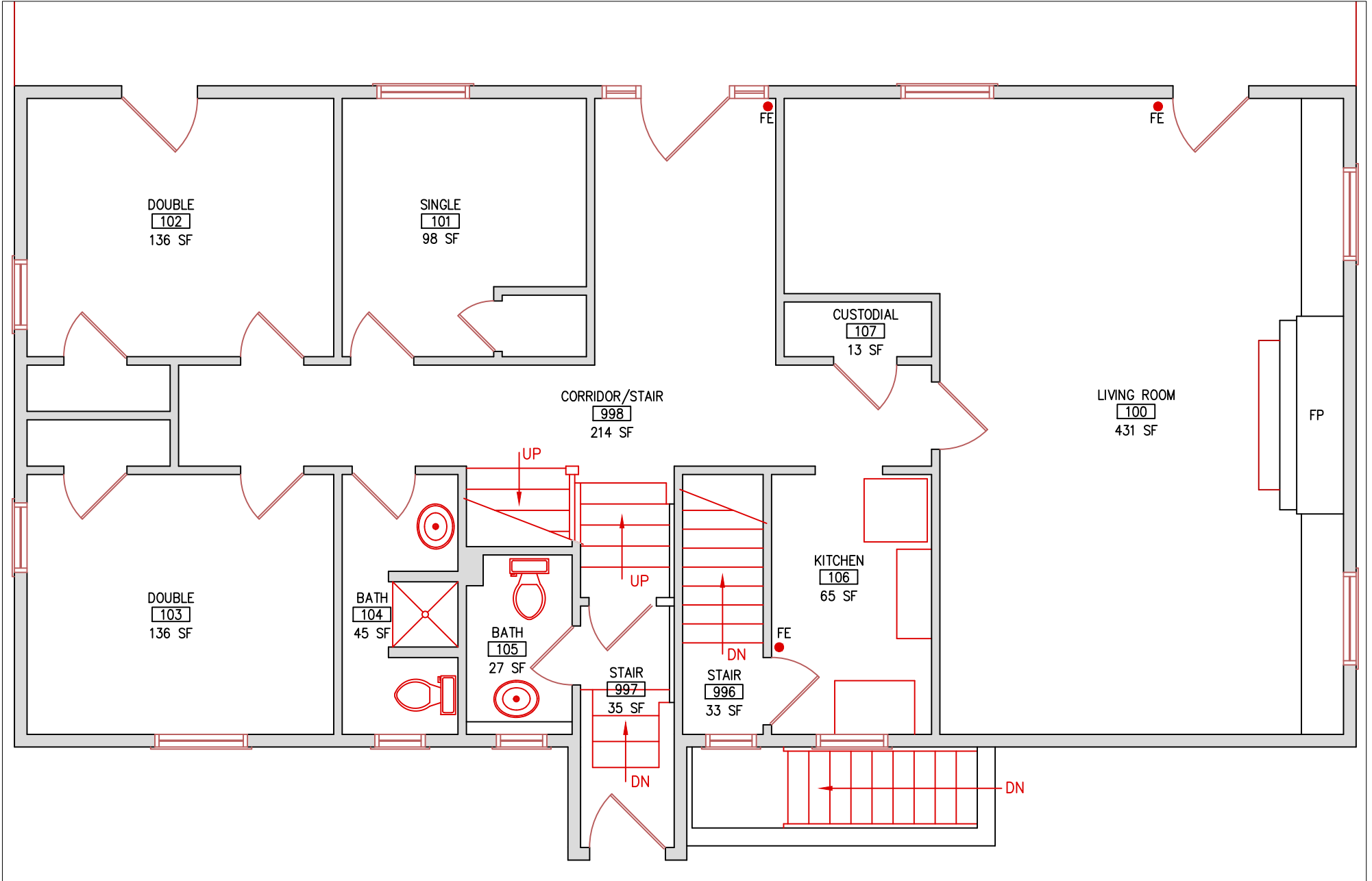
DOUBLES: 2 (4)

TOTAL CAPACITY = 5

Total Capacity (1st & 2nd Floors) = 18

SINGLE - 1 twin bed

DOUBLE = 2 twin beds



# Tamarack

## SECOND FLOOR

SECOND FLOOR BED COUNT:

SINGLE: 1

DOUBLES: 6 (12)

TOTAL CAPACITY = 13

Total Capacity (1st & 2nd Floors) = 18

SINGLE - 1 twin bed

DOUBLE = 2 twin beds

