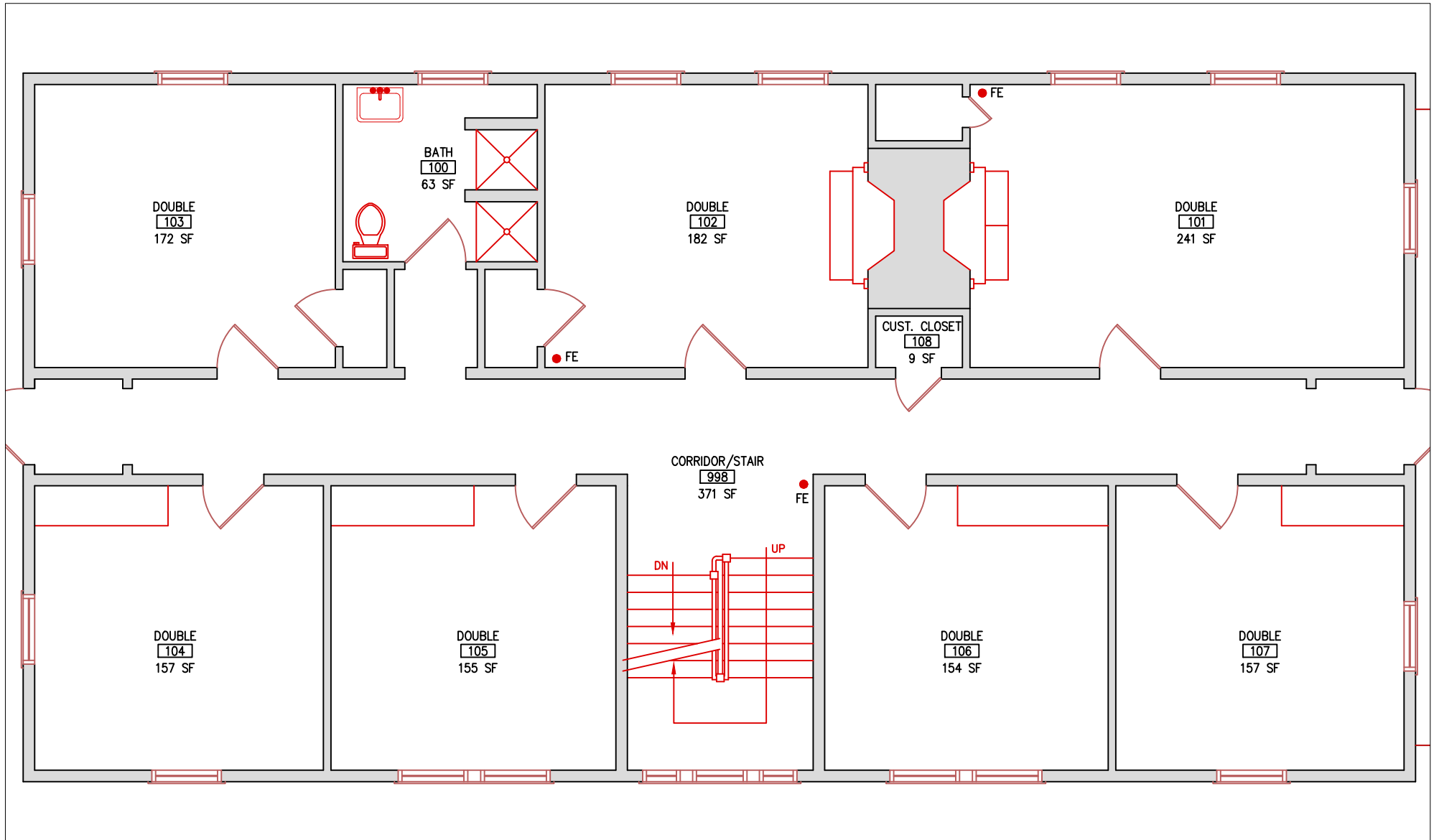


# LARCH

## FIRST FLOOR

FIRST FLOOR BED COUNT:  
DOUBLES: 7 (14)

TOTAL CAPACITY = 14  
Total Capacity (1st & 2nd Floors) = 26  
DOUBLE = 2 twin beds



# LARCH

## SECOND FLOOR

SECOND FLOOR BED COUNT:  
DOUBLES: 6 (12)

TOTAL CAPACITY = 12  
Total Capacity (1st & 2nd Floors) = 26  
DOUBLE = 2 twin beds

